

**PROJECT ASSESSMENT**  
*“What needed to be done”*

This large, formed and poured commercial pool was in need of complete re-construction. The entire pool interior including the expansion joints and waterline tiling was covered with a spray applied fiberglass liner only a couple of seasons before our work began. With no room for expansion or contraction, and a poorly prepared substrate, the liner began to release pulling off chunks of freeze damaged sub-surface concrete along with it. The pool coping was badly deteriorated and releasing from the bond beam at numerous locations around the perimeter of the pool.

**RENOVATION PLAN**  
*“How it was done”*

Following removal of the liner, waterline tiling and all loose and deteriorated concrete, the surface received high-pressure abrasive water blasting. High-grade epoxy sealants filled structure cracks in the pool shell. The complete existing concrete surface including the tile bed area was reinforced with a pneumatically applied, course, quartz aggregate cementitious render coat utilizing fibers, bonding and water reducing agents

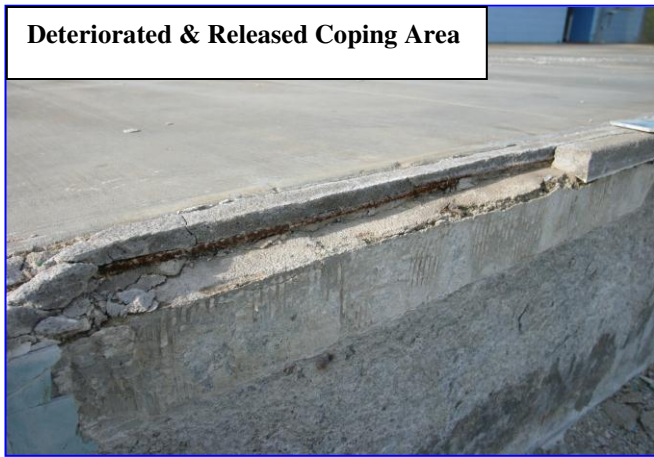
in the mix. New frost-proof waterline tiling was installed. Particular care was taken to cut and rebuild a previously filled expansion joint between the existing pool shell and pool decking before forming and pouring an *in situ* cantilever coping, topped with colored kool-deck. The INTER-GLASS® Reinforced Composite System was installed over the entire remaining pool interior surface.



SAMPLE PICTORIAL SEQUENCE ON BACK OF THIS PAGE

# CITY OF BURLINGAME, KANSAS

## BURLINGAME, KANSAS



**PROJECT SPECIFICATIONS:**  
TOTAL SQ. FT.: 6,200  
POOL SHAPE: LARGE IRREGULAR, HOPPER BOTTOM 10 FT. DEEP  
TYPE OF CIRCULATION: SKIMMERS  
TYPE OF CONSTRUCTION: FORMED & POURED  
TYPE OF FINISH AFTER RENOVATION: INTER-GLASS®