



Before

PROJECT ASSESSMENT

“What needed to be done”

Remodeling and renovating this large, holodomed pool set in the middle of an operating hotel required specialized attention. Past, repeated pool paintings did not solve the pool’s yellowing stained appearance. Each new layer of pool paint continued to blister and chalk. The existing waterline tiling was old and out of date, and safety markings such as depth and step demarcation were lacking.

RENOVATION PLAN

“How it was done”

Abrasive blasting was required to remove layers of blistering and peeling pool paint. Set just yards away from an operating restaurant, the entire pool setting required tarping before any work began. Ventilation units and tubing were set up for air circulation and to remove any residual fumes and dust out from the hotel.

The existing tiling was mechanically removed. Following abrasive blasting, high pressure water blasting (>5000 psi), and new tile installation, the INTER-GLASS® Reinforced Composite System was installed over the entire remaining pool interior surface.



Renovation Results

SAMPLE PICTORIAL SEQUENCE ON BACK OF THIS PAGE

HOLIDAY INN - MIDTOWN

GRAND ISLAND, NEBRASKA

Yellowed Surface on Entry Steps



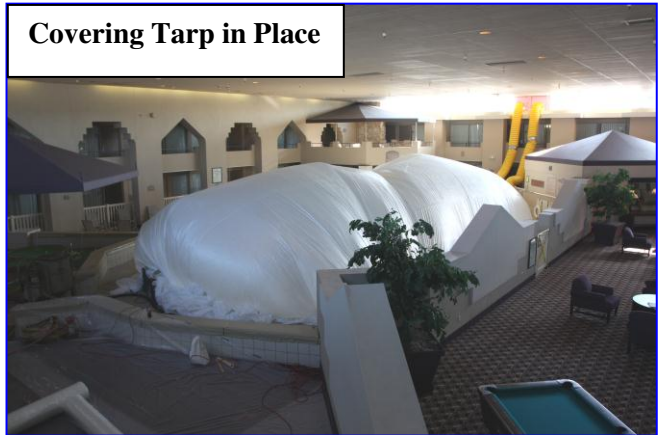
Blistering & Peeling Pool Paint



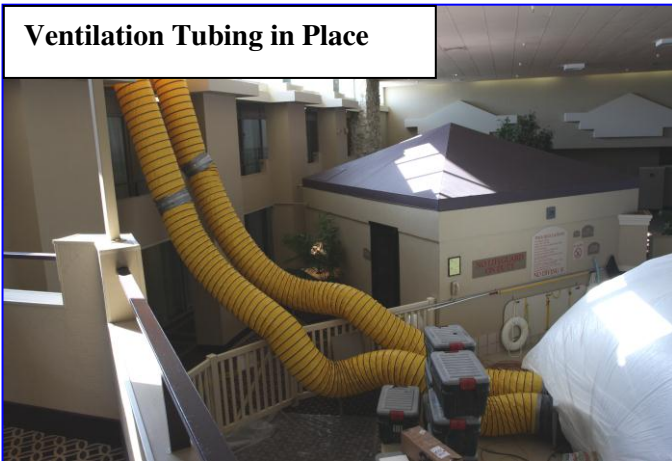
Sandblasting Safety Signs in Place



Covering Tarp in Place



Ventilation Tubing in Place



INTER-GLASS® Installation in Progress



PROJECT SPECIFICATIONS:

TOTAL SQ. FT.:	1,950
POOL SHAPE:	IRREGULAR
TYPE OF CIRCULATION:	SKIMMERS
TYPE OF CONSTRUCTION:	POURED & FORMED CONCRETE
TYPE OF FINISH AFTER RENOVATION:	INTER-GLASS®